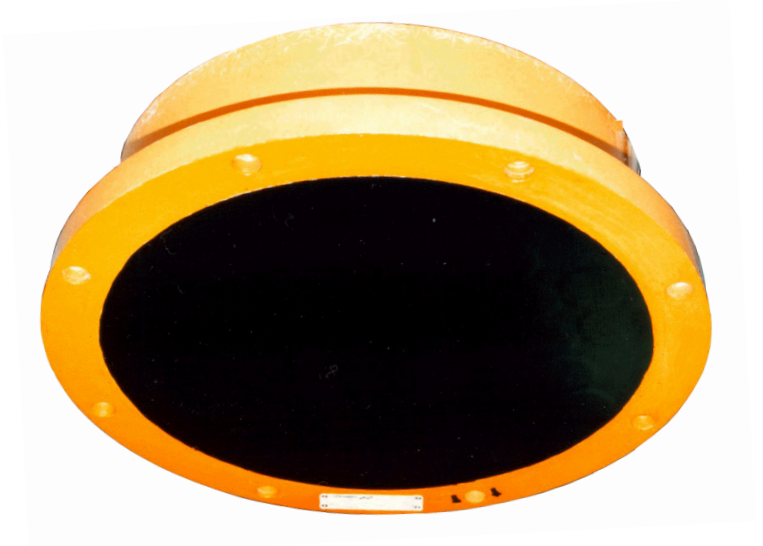


18 kHz Split-beam transducer



Introduction

The ES 18 is a split-beam transducer incorporating 44 Tonpiliz elements distributed over four quadrants. The following specifications are valid when all four quadrants are connected in parallel.

Order number

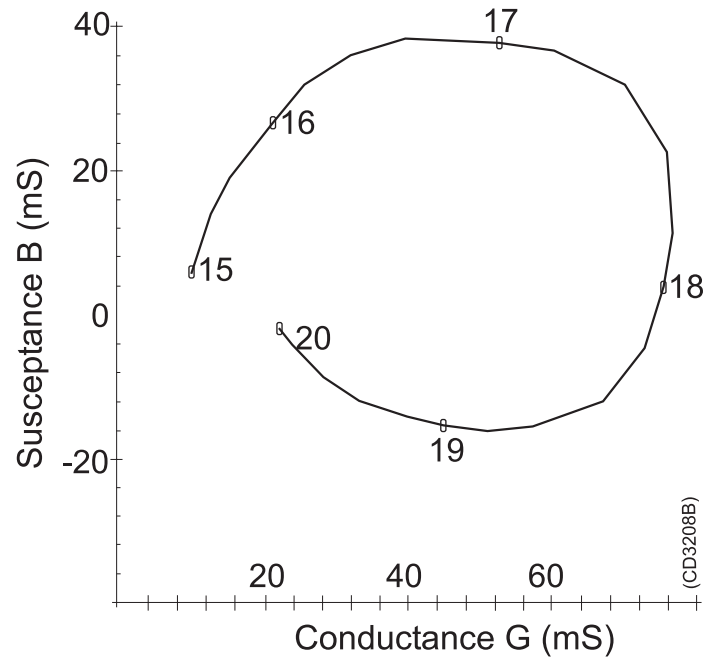
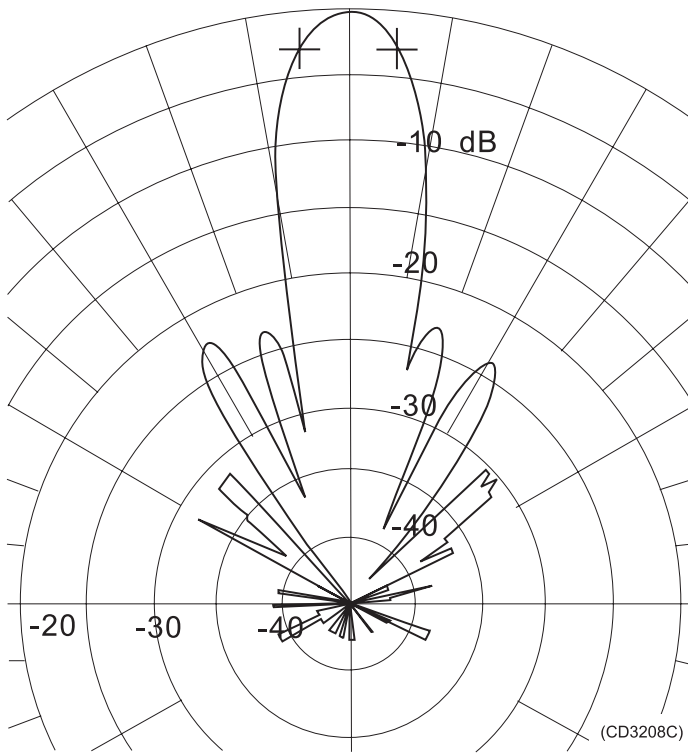
KSV-088694

Technical specifications

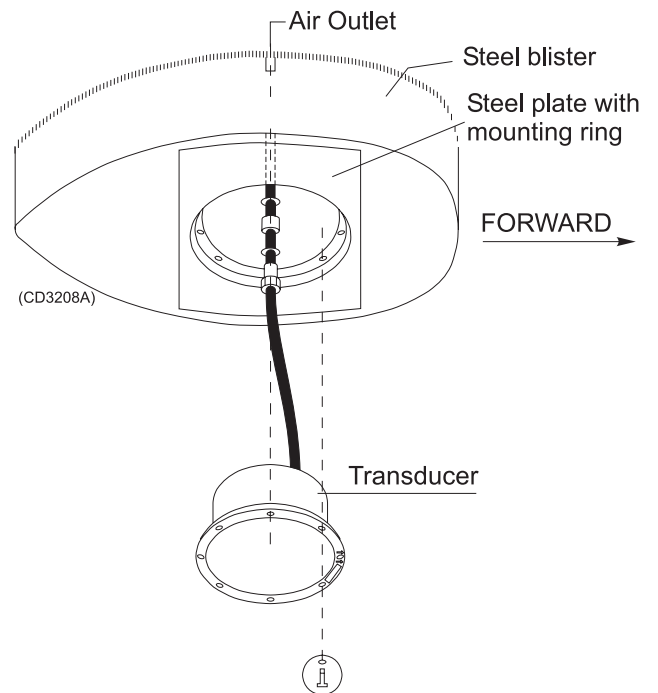
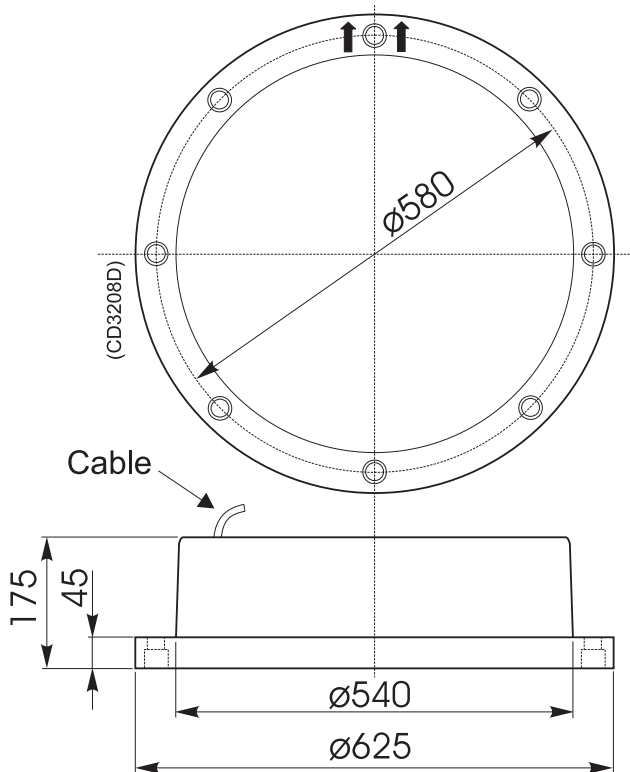
Resonant frequency 18 kHz
Beamwidth, circular 11 deg \pm 2
Directivity:
D 300 \pm 20%
DI=10logD 25 \pm 1 dB
Equivalent two-way beam angle:
 Ψ 0.020 \pm 20%
10 log Ψ -17 \pm 1 dB
Side lobes less than -18 dB
Back radiation less than -35 dB
Impedance:
Nominal value 15 ohms
Max. variation in |Z| 11 - 20 ohms
Max variation in phase angle \pm 30 deg
Transmitting response 182.0 dB \pm 2
re 1 μ Pa per V
Receiving sensitivity, open circuit -174 dB \pm 2
re 1V per μ Pa

Electroacoustic efficiency 0.60 \pm 0.20
Maximum pulse power input 2000 W
Maximum continuous power input 100 W
Maximum transducer depth 50 m
Cable length 20 m
Cable diameter 12.4 \pm 0.5 mm
Weight without cable 85 kg
Storage temperature -20 to 70 $^{\circ}$ C

Data



Installation



Manufacturer:

Simrad AS

Strandpromenaden 50

P.O.Box 111

N-3191 Horten

Telephone: +47 33 03 40 00